

**K-2660IN-1
FOREFRONT**

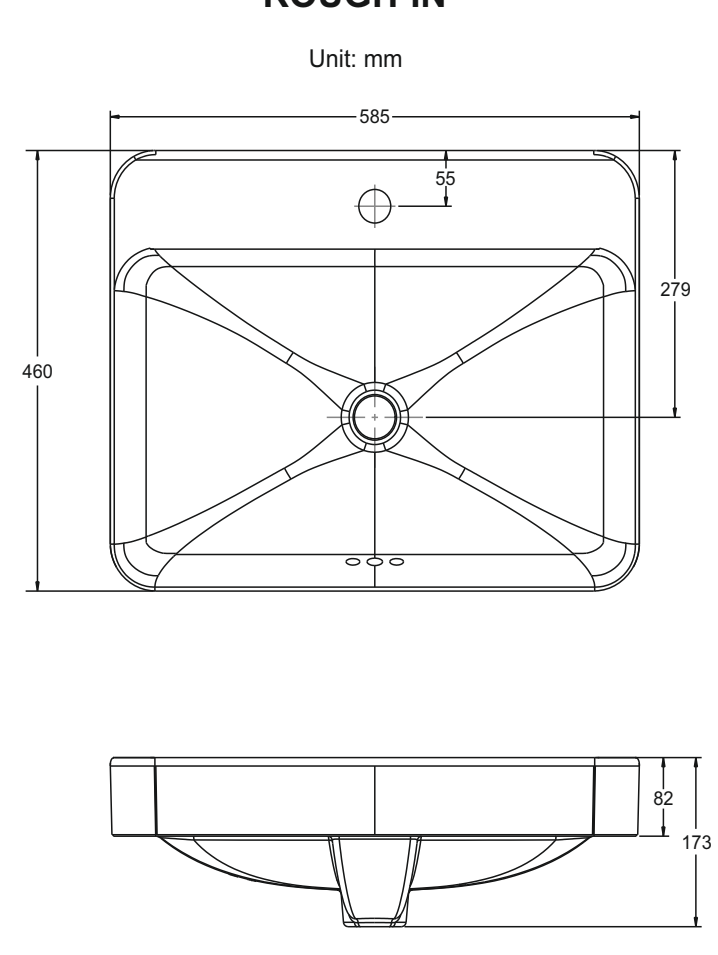
BEFORE YOU BEGIN

Observe all local plumbing and building codes. Inspect the waste and supply tubing replace if necessary. Prior to installation, unpack the new lavatory and carefully inspect it for damage. Return the lavatory to its protective carton until you are ready to install it. For replacement installations, make sure the existing cutout is the same or smaller size as per the new lavatory. Use the template supplied with the lavatory to mark correct size cutout. Kohler lavatory is made according to American National Standard so that it can match the American lavatory fittings. Any other lavatory fittings may not fit for Kohler lavatory.

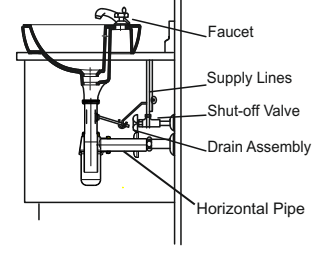
RECOMMENDED TOOLS AND MATERIALS

- (Not Supplied)**
- Template(supplied)
 - Safety glasses
 - Pencil
 - Scissors
 - Tape measure
 - Putty knife
 - Plumbers putty
 - Hacksaw
 - Keyhole saw or saber saw
 - Drill (13mm or 1/2" dia. drill bit or larger)
 - Adjustable wrench
 - Pipe wrench
 - Tubing cutter

ROUGH-IN

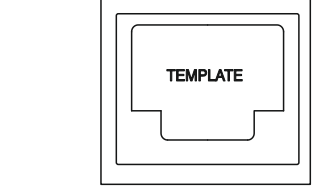


REMOVE EXISTING LAVATORY

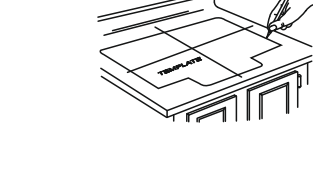


Turn off the water supply to the faucet. Open the faucet valves, then disconnect the supply lines. Disconnect the drain assembly and remove the trap. Remove the existing lavatory.

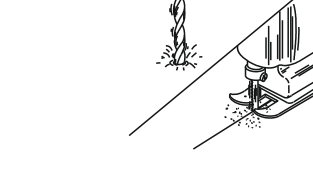
INSTALL NEW LAVATORY



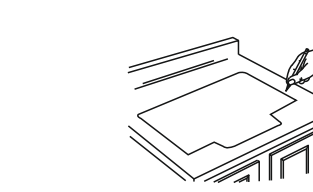
Cut the template on the cutout line. Position the template on the countertop to ensure clearance between the lavatory, faucet, and backsplash. Verify cabinet clearance beneath the countertop.



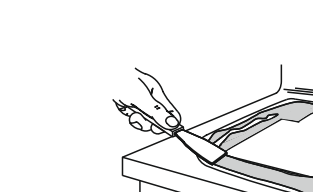
Trace the template on the countertop with a pencil. Re-check the clearance between the lavatory, faucet, backsplash, and cabinet. Adjust the template accordingly.



Drill a 13mm hole on the inside of the cutout opening. Cut the opening in the countertop along the inside edge of the pencil line.



Temporarily position the lavatory in the opening, and adjust to fit. **CAUTION: Risk of personal injury or product damage.** Large lavatories are very heavy. Get help lifting the lavatory into place.



Trace a pencil line around the outside edge of the lavatory. Remove the lavatory. Install the faucet and drain according to the manufacturer's instructions.



Apply two beads of sealant to the inside of the pencil line. Spread the sealant evenly with a putty knife.



Carefully position the lavatory in the cutout, and press down firmly. **CAUTION: Risk of personal injury or product damage.** Large lavatories are very heavy. Get help lifting the lavatory into place.



Immediately wipe away any excess sealant, and fill any voids as needed. Verify that the lavatory has not moved out of position. Allow the sealant to cure for at least 30 minutes before proceeding.

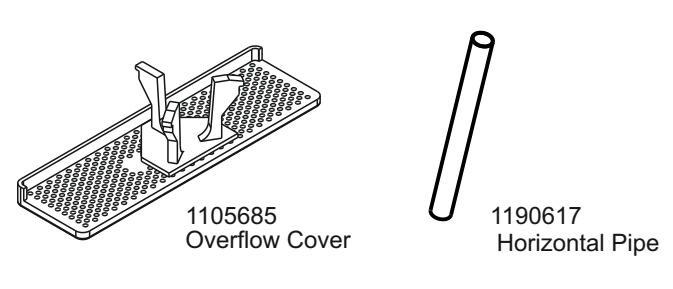


Connect the faucet supply lines. Connect the drain assembly. Open the faucet valves, and check for leakage. Clean up with a non-abrasive cleaner.

IMPORTANT CONSUMER INFORMATION (CARE AND CLEANING)

To keep your lavatory looking new, make sure you rinse it out thoroughly after each use. **DO NOT USE ABRASIVES** on this product, as they will scratch and ruin the surface. Stubborn stains, paint, or tar can be removed with turpentine or paint thinner.

SERVICE PARTS



RECOMMENDED INSTALLATION PARTS

Description	Installation parts
* Bottle Trap	7314IN-CP
* Bottle Trap	16407IN-CP
Drain Assembly	9031IN-CP/9031IN-A-CP

* Connecting Pipe-1190617 (Supplied with the Lavatory), to be used for the above mentioned Bottle Traps.

Toll Free 1800 103 2244
kohler.co.in
© 2006 Kohler Co.

APPLICABLE STANDARDS:-
1) D300_001 : Kitchen Sink & Lavatory Cutout Template Design

NOTES: 1) Title block & instructions below not to be part of printing. Printing to be done as per the scale mentioned in drawing.
2) When plotting template full size: make sure horizontal & vertical dimensions match the dimensions on the template.

MATERIAL :	NA
GRADE :	NA
COLOR/FINISH :	NA

ALL DIMENSIONS IN MM		DIMENSIONING AND TOLERANCING PER ASME Y14.5M-1994			
APPROVED	ARUN BHARDWAJ	DATE	06.03.12	PLOT DATE	SCALE
DRAWN	MANISH	CHECKED	HEMLATA	DATE	DWG
DO NOT SCALE DRAWING		PROFE		SIZE	
THIRD ANGLE PROJECTION					
<p>KOHLER KOHLER INDIA CORP. PVT. LTD.</p>					
<p>THIS DRAWING IN DESIGN AND DETAILS IS THE PROPERTY OF KOHLER CO. AND MAY NOT BE USED EXCEPT IN CONNECTION WITH KOHLER CO. WORK. ALL RIGHTS OF INVENTION ARE RESERVED.</p>					
<p>DESCRIPTION INSTALLATION INSTRUCTIONS</p>					
DWG. NO.	1109397-IN01				SHT
					1 OF 1

TOLERANCE	TABLE
UPTO 6	± 0.5
6-30	± 1.0
30-120	± 1.5
120-400	± 2.5
400-1000	± 4.0
1000-2000	± 6.0
ABOVE 2000	± 8.0

DWG	REV	SYM	BY	APPROVED BY	DESCRIPTION	DATE
1	A	MA	A. BHARDWAJ	SEE PCI # IN1100543	12.04.12	