

497mm

THE BOLD LOOK OF KOHLER®

K-2075IN-1/-4/-8 SERIF

VITREOUS CHINA SELF-RIMMING LAVATORY CUT-OUT TEMPLATE / INSTALLATION INSTRUCTION

BEFORE YOU BEGIN

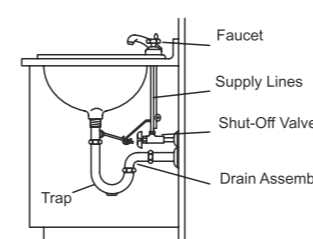
- Observe all local plumbing and building codes.
- Inspect the drainage and supply tubing; Replace if necessary.
- Prior to installation, unpack the new lavatory and carefully inspect it for damage. Return the lavatory to its protective carton until you are ready to install it.
- For replacement installations, make sure the existing cutout is the same or smaller size as the new lavatory.
- Use the template supplied with the lavatory.
- Do not substitute another sealant if one is supplied with this lavatory.
- If possible, assemble the faucet and drain to the lavatory before installing the lavatory.

RECOMMENDED TOOLS AND MATERIALS

- Template (supplied)
- Safety Glasses
- Pencil
- Tape Measure
- Putty Knife
- Keyhole Saw or Saber Saw
- Sealant (may be supplied)
- Scissors
- Pipe Wrench
- Drill With 1/2" (13mm) Or Larger Drill Bit
- Adjustable Wrench
- Tubing Cutter
- Hacksaw

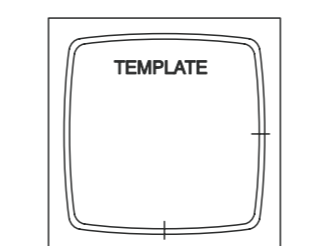
Product Information

Fixture:	Basin Area	Basin Depth	
Lavatory	430mm x 278mm	158mm	
Outlet	D. 44mm		
* Approximate Measurements For Comparison Only.			
Holes	K-2075IN-8	K-2075IN-4	K-2075IN-1
Spout	D. 30mm	D. 30mm	D. 35mm
Faucet	D. 35mm	D. 30mm	



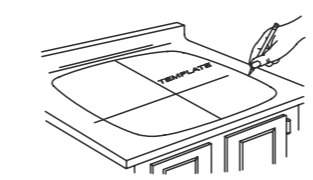
REMOVE EXISTING LAVATORY

- Turn off the water supply to the faucet.
- Open the faucet valves, then disconnect the supply lines.
- Disconnect the drain assembly and remove the trap.
- Remove the existing lavatory.

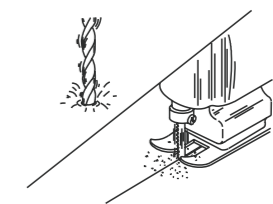


INSTALL NEW LAVATORY

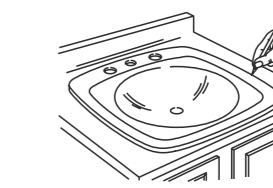
- Cut the template on the cutout line.
- Position the template on the countertop to ensure clearance between the lavatory, faucet, and backsplash. Verify cabinet clearance beneath the countertop.



- Trace the template on the countertop with a pencil.
- Check the clearance between the lavatory, faucet, backsplash, and cabinet. Readjust the template.

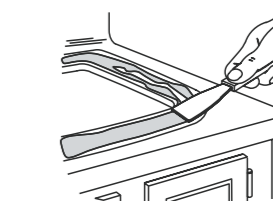


- Drill a 1/2" (13mm) hole on the inside of the outline.
- Cut the opening in the countertop along the inside edge of the pencil line.

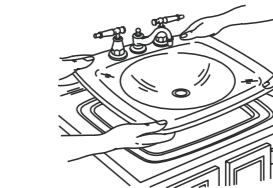


- ⚠ **CAUTION: Risk of personal injury or product damage.** Large lavatories are very heavy. Get help lifting the lavatory into place.
- Temporarily position the lavatory in the opening, and adjust to fit.
- Trace a pencil line around the outside edge of the lavatory.
- Remove the lavatory.

IF THE FAUCET AND DRAIN ARE NOT INSTALLED, INSTALL THEM AT THIS TIME. BE SURE TO FOLLOW ALL INSTRUCTIONS PACKED WITH THE PRODUCT.



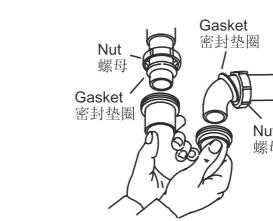
- Apply two beads of sealant to the inside of the pencil line.
- Spread the sealant evenly with a putty knife.



- ⚠ **CAUTION: Risk of personal injury or product damage.** Large lavatories are very heavy. Get help lifting the lavatory into place.
- Carefully position the lavatory in the cutout, and press down firmly.



- Immediately wipe away any excess sealant, and fill any voids as needed.
- Verify that the lavatory has not moved out of position.
- Allow the sealant to cure for at least 30 minutes before proceeding.



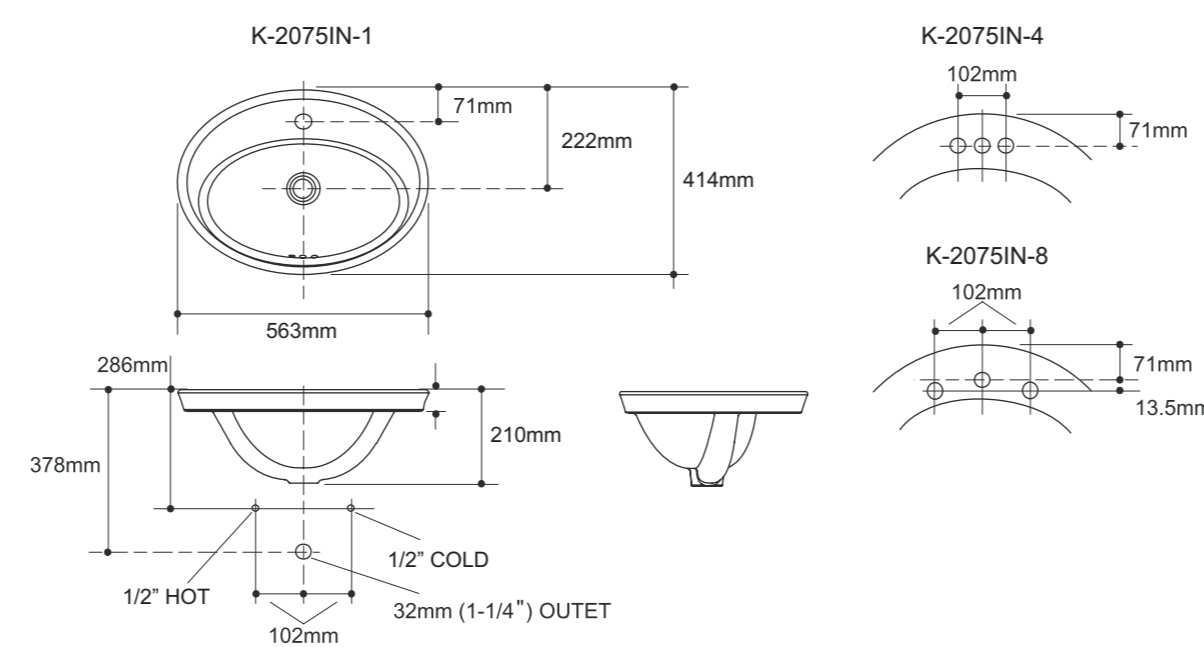
CONNECT SUPPLIES

- Connect the drain assembly.
- Connect the faucet supply lines and complete the faucet installation. Be sure to follow all instructions packed with the faucet.

IMPORTANT CONSUMER INFORMATION (CARE AND CLEANING)

To keep your lavatory looking new, make sure you rinse it out thoroughly after each use. **DO NOT USE ABRASIVES** on this product, as they will scratch and ruin the surface. Stubborn stains, paint, or tar can be removed with turpentine or paint thinner.

ROUGH-IN



CUT ALONG THIS LINE

RIM OF LAVATORY

WHEN PLOTTING TEMPLATE FULL SIZE: make sure horizontal and vertical dimensions match the dimensions labeled on the template.

1041885-IN01

357mm