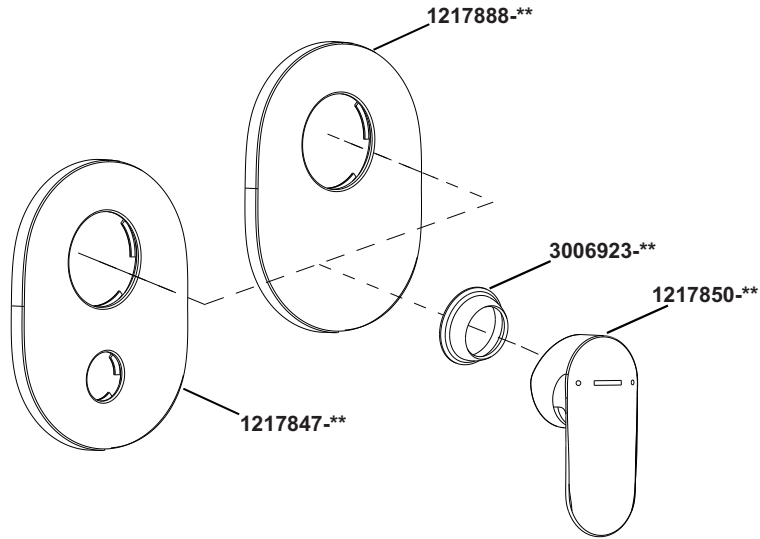


99471IN-4FP-**
99472IN-4FP-**

RECESSED SHOWER ONLY TRIM
RECESSED BATH & SHOWER TRIM



**Color code must be specified when ordering

KOHLER®

Kohler India Corporation Pvt. Ltd.
6th Floor, Office Block
Ambience Mall, Ambience Island, NH-8
Gurgaon-122002
Haryana, India

Customer Care No : 1800 103 2244 (Toll Free) & +91-124-4319685 / 86
Customer Care Email : indiacustomercare@kohler.com
www.kohler.co.in

99471IN-4FP-**
99472IN-4FP-**

RECESSED SHOWER ONLY TRIM
RECESSED BATH & SHOWER TRIM

BEFORE YOU BEGIN

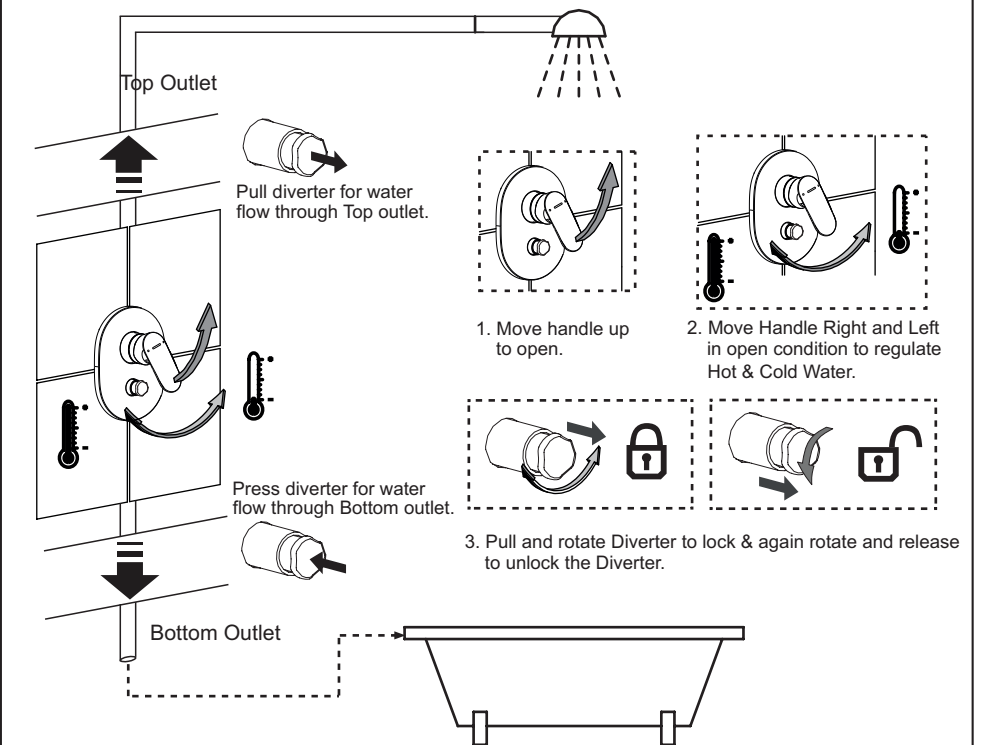
All information is based on the latest product information available at the time of publication. Kohler Co. reserves the right to make changes in product characteristics, packaging, or availability at any time without notice.

Please leave these instructions for the consumer. They contain important information.

NOTE:

1. Observe all local plumbing and building codes.
2. Do not remove the plaster guard from the valve body until instructed to.

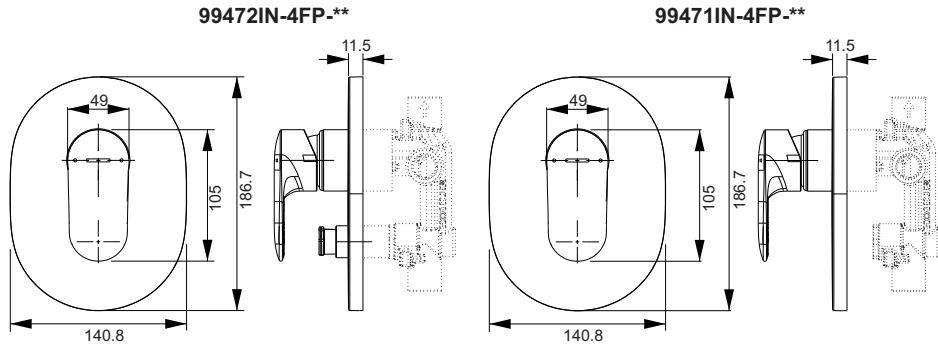
HOW TO USE



Note: Diverter function used for only Recessed Bath & Shower.

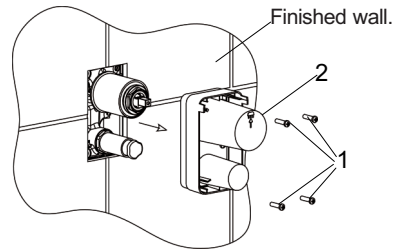
ROUGH-IN DIMENSIONS

ALL DIMENSIONS IN (mm)

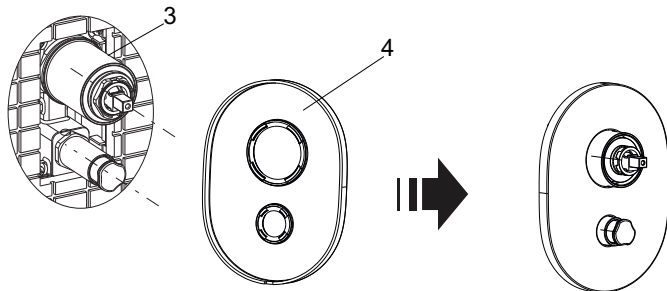


INSTALLATION

- 1 Loosen the screws(1), and remove the plastic guard(2).

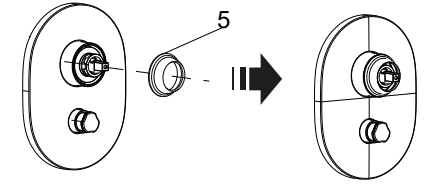


- 2 Apply a ring of plumbers putty around the back surface of the faceplate(4). Slide the faceplate on the valve(3). Push it against the wall. Remove any excess putty.

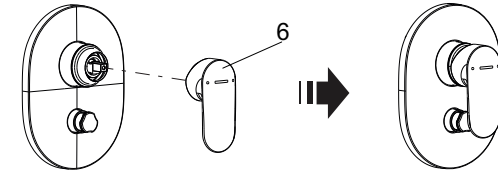


INSTALLATION

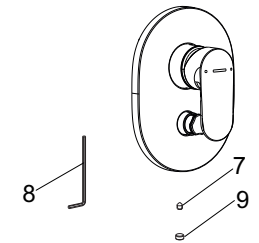
- 3 Tighten the bonnet(5) on the valve.



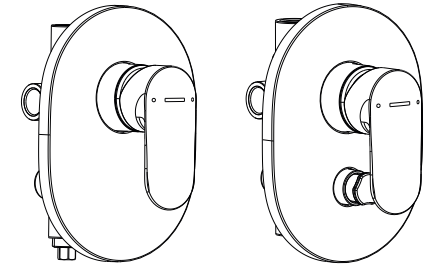
- 4 Install the handle(6) on the valve stem.



- 4 Tighten the screw(7) with the hex wrench(8) & Press plug button(9) to the hole.



The illustration shown is the correct position of the handle in the closed position.



CLEANING INSTRUCTIONS

