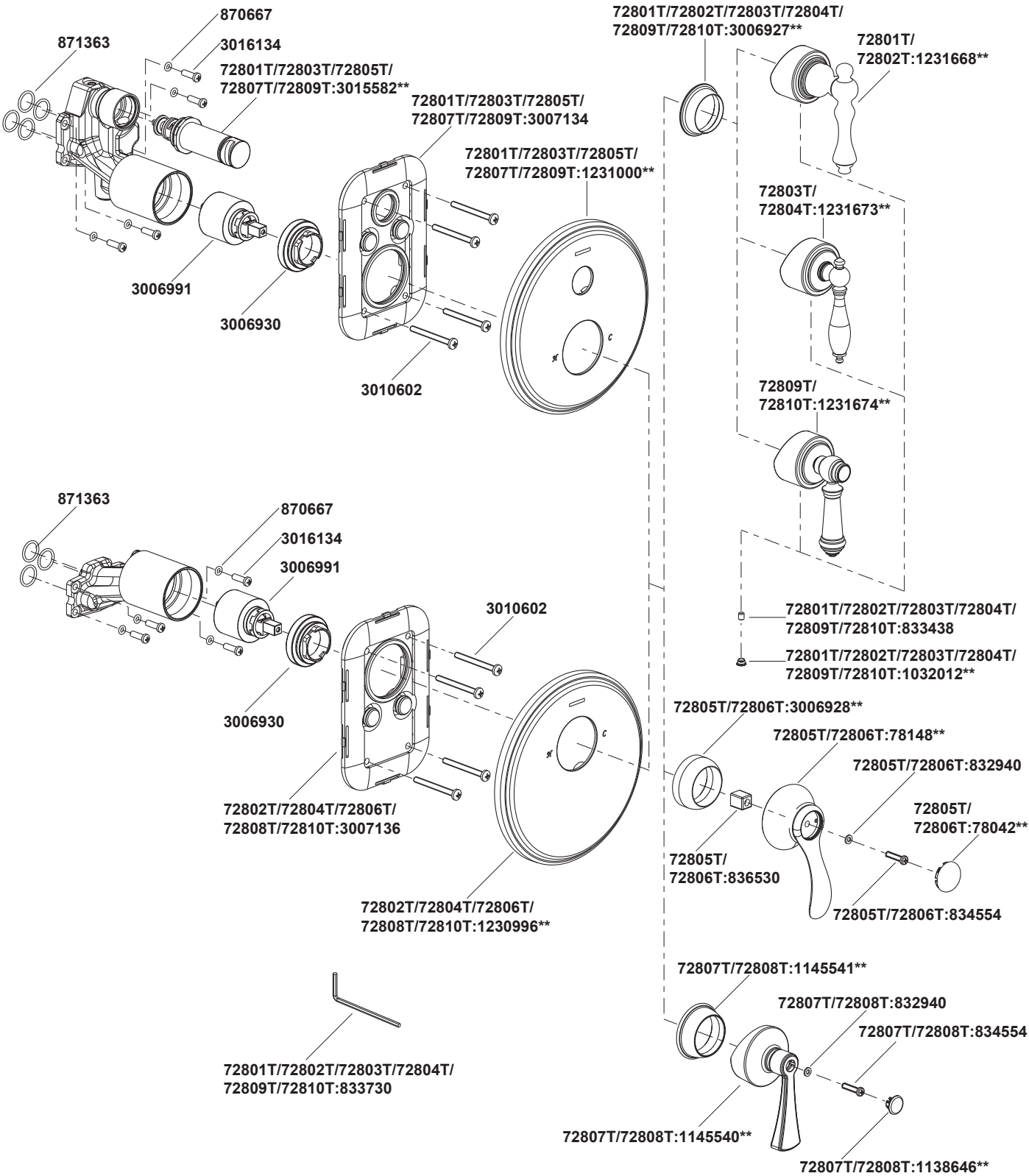


72801T-4 72803T-4M 72805T-4 72807T-4 72809T-4 Recessed Bath Shower Trim And Valve  
72802T-4 72804T-4M 72806T-4 72808T-4 72810T-4 Recessed Shower Only Trim And Valve



\*\*Color code must be specified when ordering.

72801T-4 72803T-4M 72805T-4 72807T-4 72809T-4 Recessed Bath Shower Trim And Valve  
72802T-4 72804T-4M 72806T-4 72808T-4 72810T-4 Recessed Shower Only Trim And Valve

BEFORE YOU BEGIN

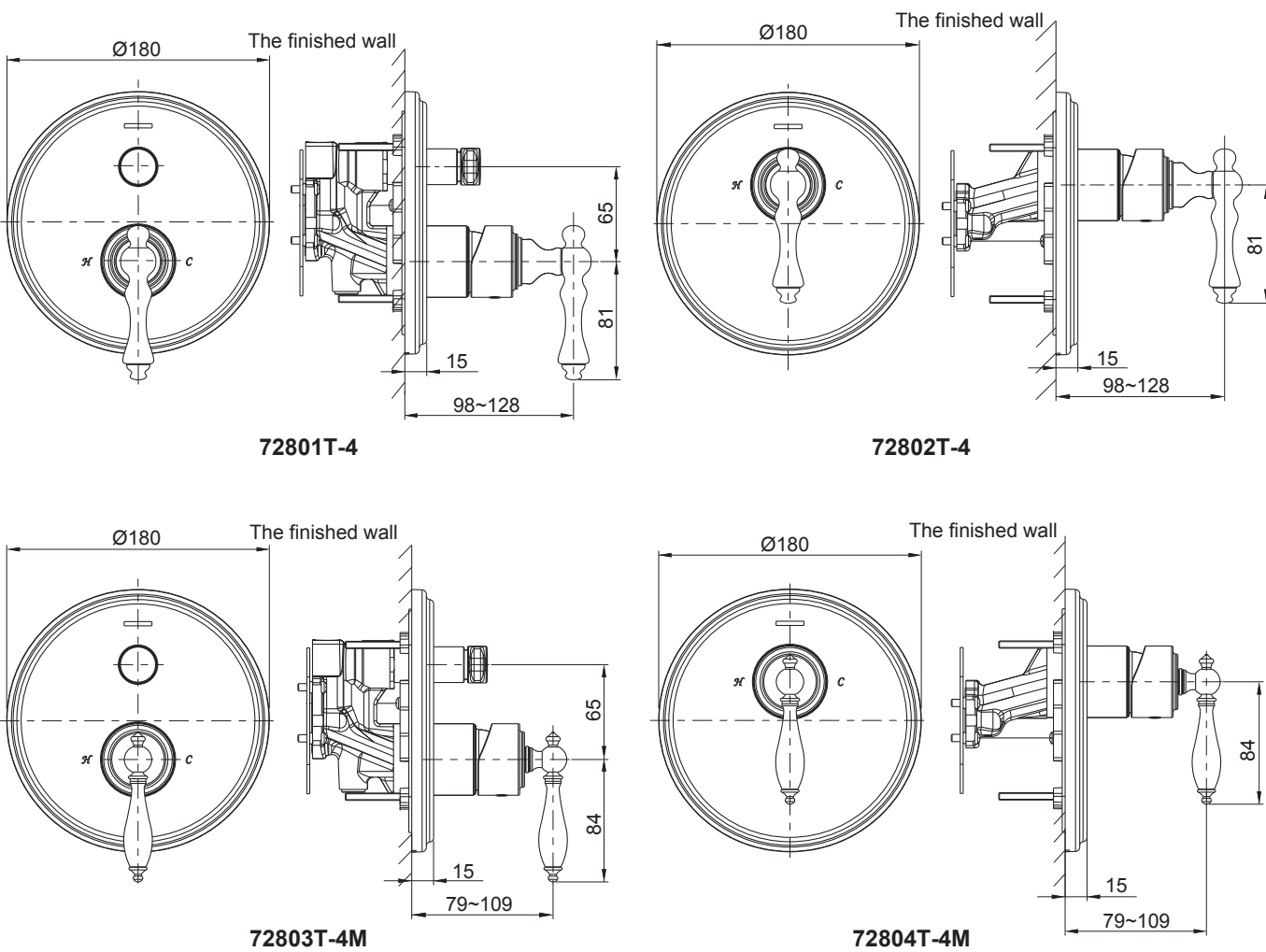
All information is based on the latest product information available at the time of publication. Kohler Co. reserves the right to make changes in product characteristics, packaging, or availability at any time without notice.

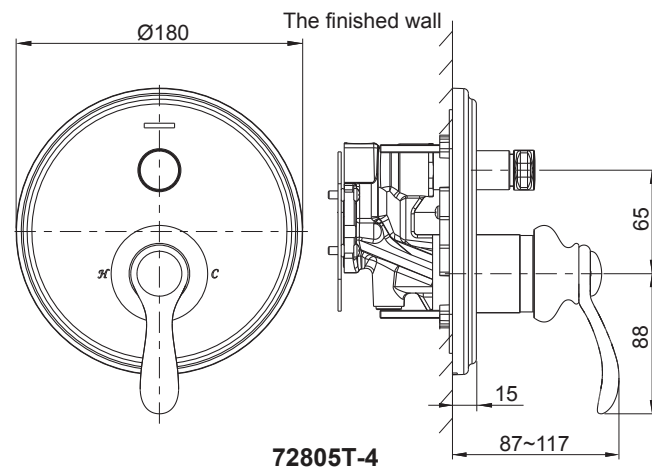
Please leave these instructions for the consumer. They contain important information.

NOTES:

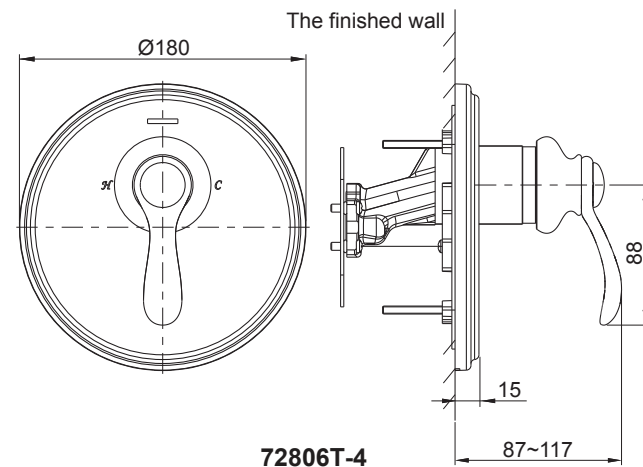
1. Flush the water supply pipes thoroughly to remove debris.
2. Inspect the supply tubing for damage and leakage. Replace and maintain as necessary.
3. Observe local plumbing codes. Shut off the main water supply.
4. Check for leaks before covering the pipes, repair as needed.
5. Please ensure only apply water pressure test on the product, and empty the air in pipe and faucet thoroughly before the test. Please ensure test pressure below 0.8MPa(8bar) and test duration within 30 minutes.

ROUGH-IN DIMENSIONS

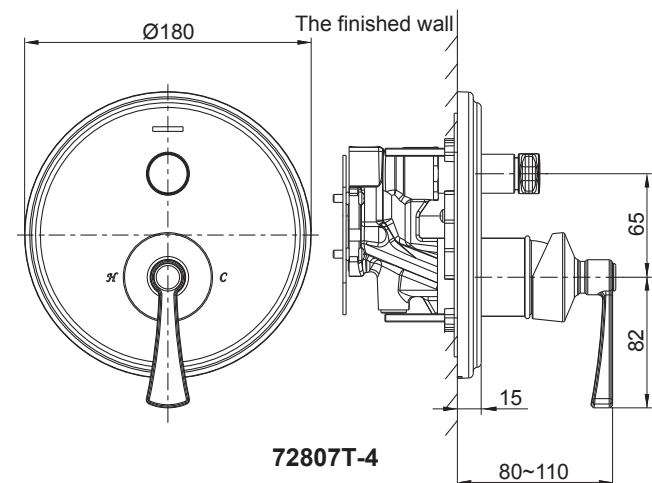




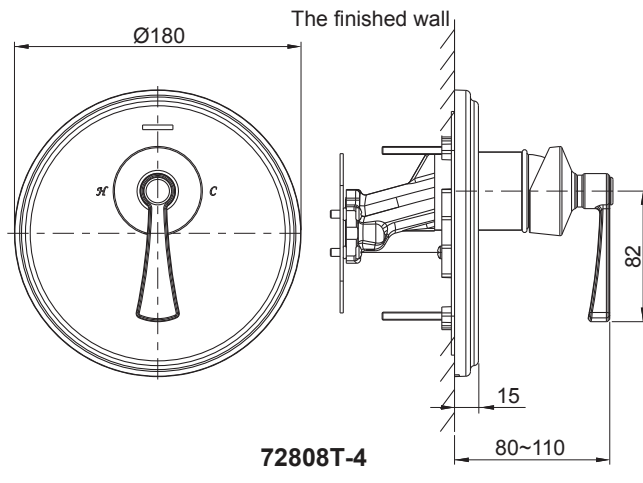
72805T-4



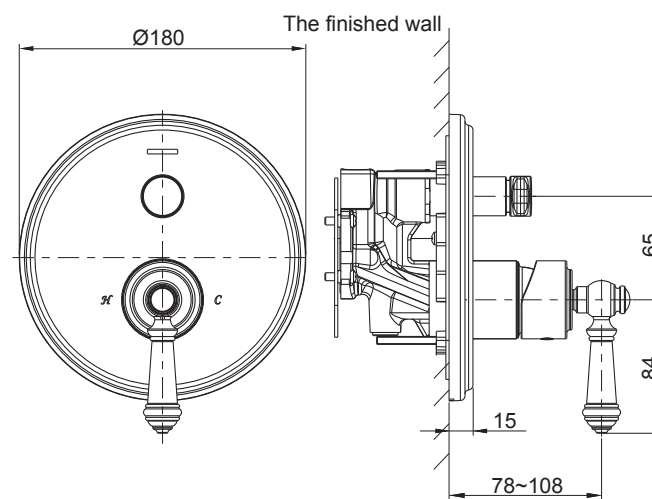
72806T-4



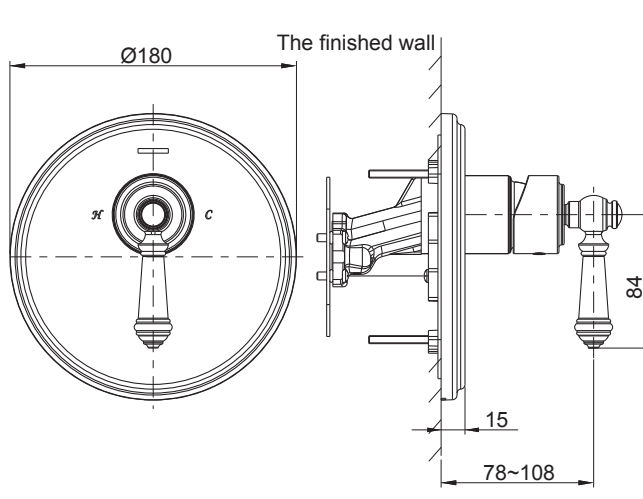
72807T-4



72808T-4

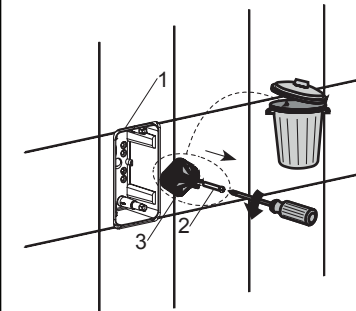


72809T-4



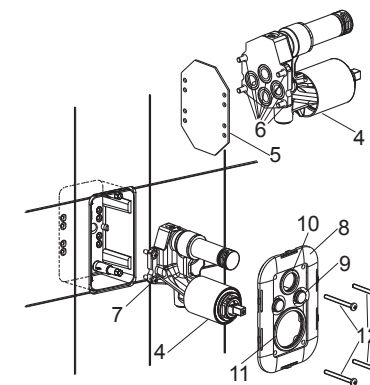
72810T-4

## INSTALLATION



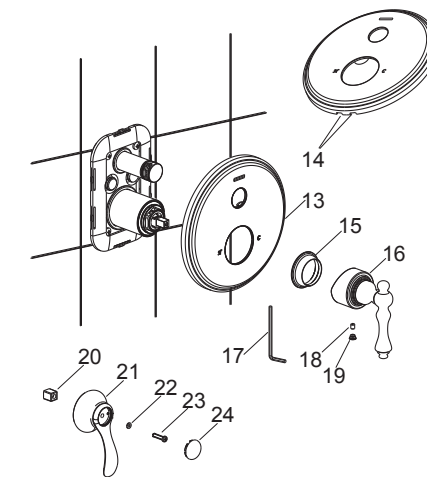
**NOTE:** Install mounting box kit(1) according to the rough-in dimensions of 98699T-NA.

Cut the protrudent part of the mounting box kit out of the finished wall. Unscrew the screw(2), remove the protect cover kit(3).



Remove the protection(5) on the valve kit(4). **NOTE:** Don't drop the o-rings(6). The holes on the bottom of the valve kit should be aligned with the holes in the mounting box. Install the valve kit into the mounting box kit, tighten the screws(7).

Slide the cover kit(8) onto the valve with the plugs(9) facing outside (**NOTE:** Don't squeeze out the rings 10,11). Push it against the wall. Secure it with the screws(12).



Slide the faceplate(13) onto the valve with slots(14) downwards. Push it against the wall. Screw the bonnet(15) on the valve.

**For 72801T, 72802T, 72803T, 72804T, 72809T & 72810T:**

Install the handle(16) on the valve stem. Tighten the screw(18) with hex wrench (17). Press plug button(19) to the hole.

**For 72805T, 72806T, 72807T & 72808T:**

Install the adapter(20) onto the valve stem(only for 72805T & 72806T). Tighten the handle(21) by the screw(23) with washer(22). Press plug button(24).

## INSTALLATION CHECKOUT

Ensure that all coupling nuts are tight.

Ensure that the handle is in the off position.

Turn on the main water supply, and check for leaks. Repair as needed.

## CLEANING INSTRUCTIONS

All Finishes: Clean the finish with mild soap and warm water. Wipe entire surface completely dry with clean soft cloth. Many cleaners may contain chemicals, such as ammonia, chlorine, toilet cleaner etc, which could adversely affect the finish and are not recommended for cleaning.

Do not use abrasive cleaners or solvents on Kohler faucets and fittings.