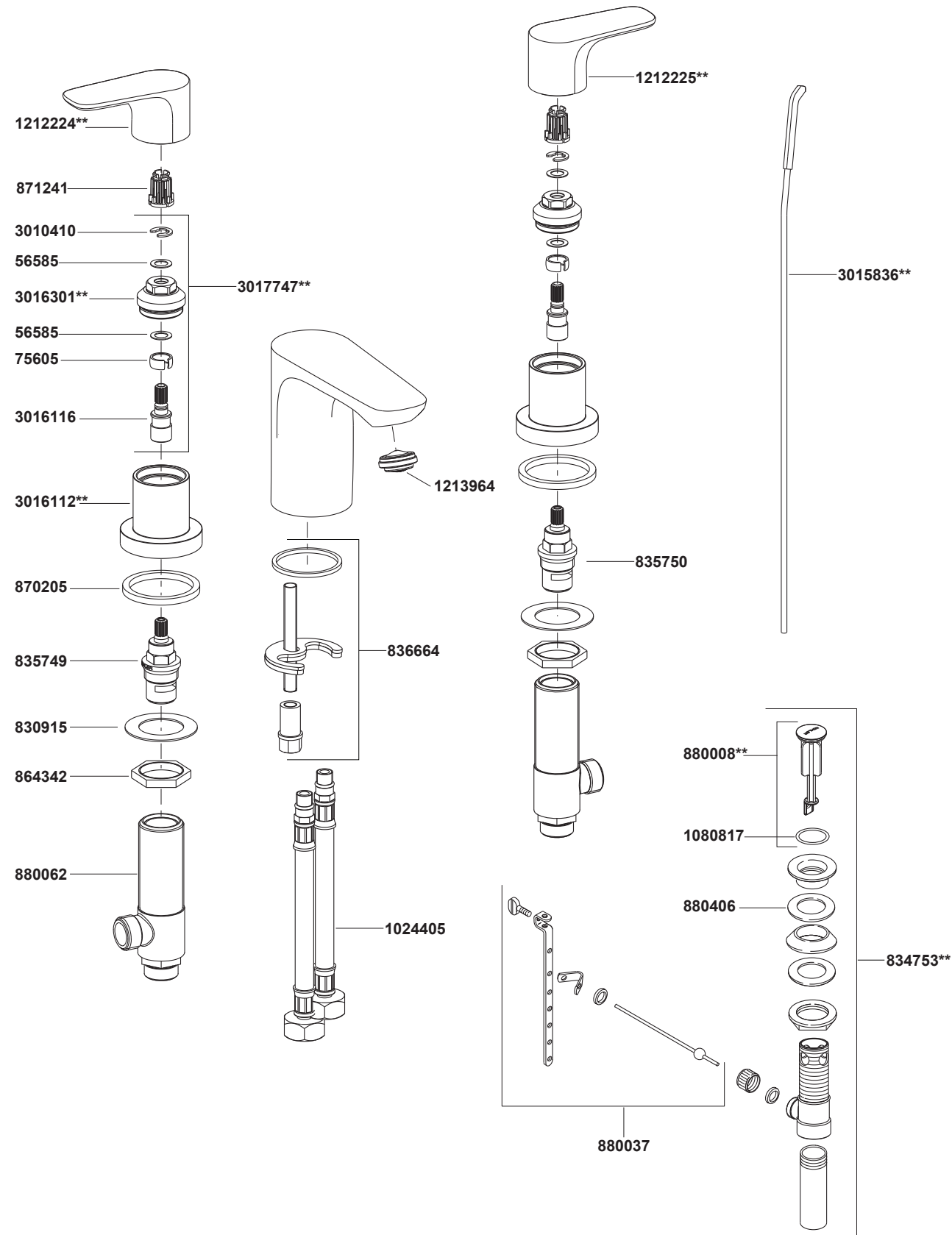


98867T-4 Widespread Lavatory Faucet



****Color code must be specified when ordering.**

98867T-4 Widespread Lavatory Faucet

BEFORE YOU BEGIN

All information is based on the latest product information available at the time of publication. Kohler Co. reserves the right to make changes in product characteristics, packaging, or availability at any time without notice. Please leave these instructions for the consumer. They contain important information.

NOTES:

1. Flush the water supply pipes thoroughly to remove debris.
2. If possible, install this faucet before installing the lavatory.
3. Inspect the supply tubing for damage and leakage. Replace and maintain as necessary.
4. Observe local plumbing codes.
5. Shut off the water supplies to the fitting.

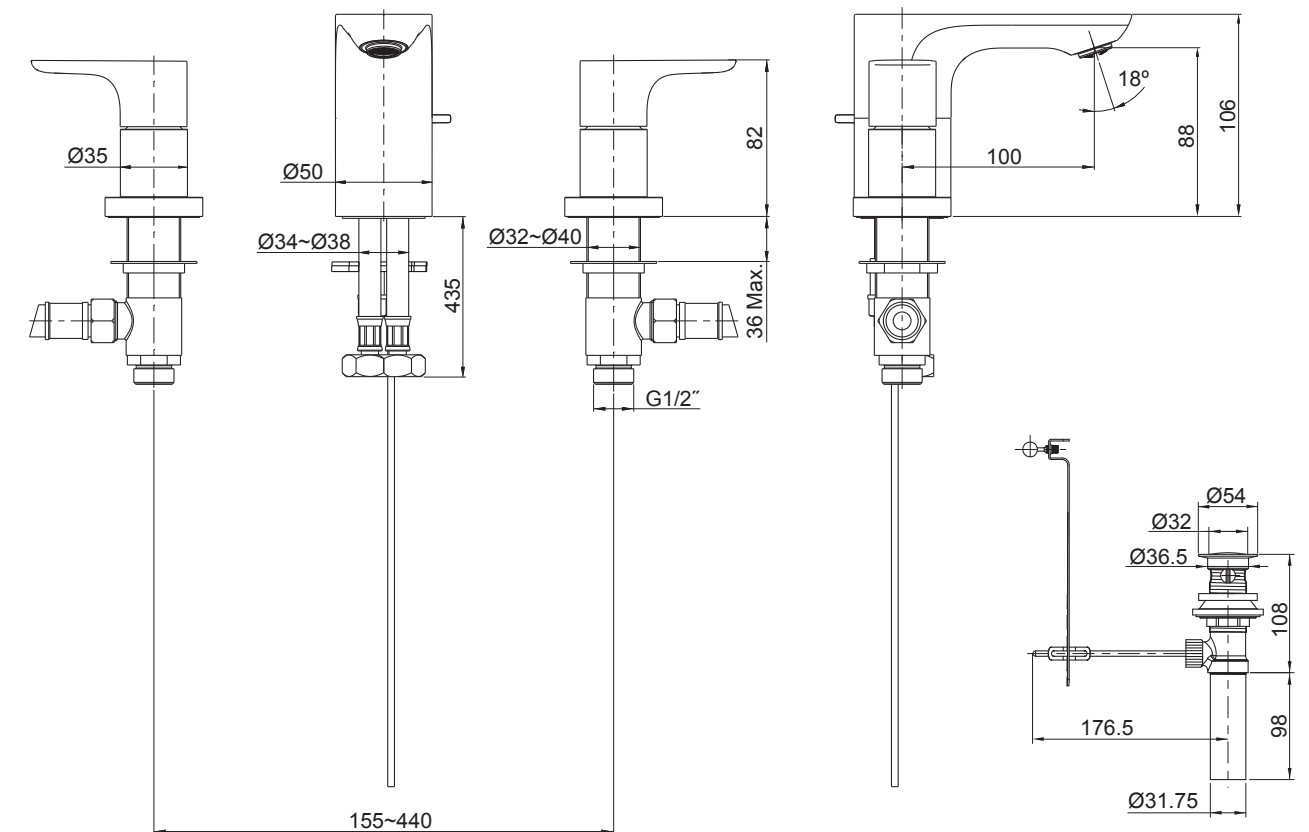
HANDLE OPERATION

Right handle opens with turning clockwise. Left handle opens with turning counter-clockwise.

STANDARD APPLICABLE

Special model meets or exceeds the following at date of manufacture: TIS

ROUGH-IN DIMENSIONS



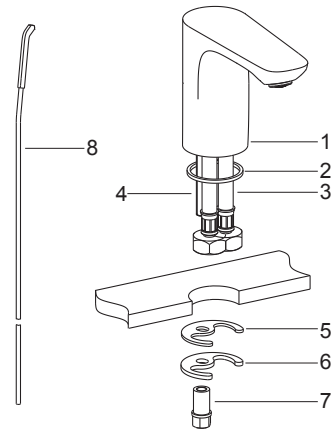
INSTALLATION

How To Install The Spout

Install mounting stud(4) into the spout base(1). Slide the washer(2) into the bottom groove of the spout through the hoses(3).

Insert the lift rod kit(8) to the back hole on the spout.

Then fit the spout kit into the center hole of lavatory. From underside of the lavatory, install the washer(5), washer(6) and the nut(7). Position the spout. Secure the spout kit by tightening nut.



How To Install The Valve Bodies And Handles

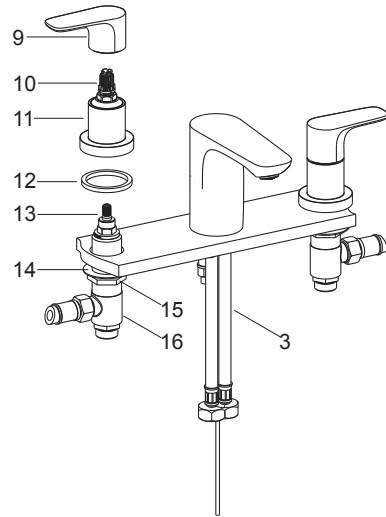
Remove handle base kits(11) and washers(12) from the valve bodies(16). Put the steel washers(14) on the valve bodies. Insert the valve bodies through mounting holes from underside of the lavatory.

NOTE: The valve body with red dot should be installed on the left side.

Install the handle base kits with washer(12) into the valve dobies. Screw and fix the handle base kits. Tighten nut(15) by wrench.

Ensure the valves(13) are in the off position. Press the handles(9) onto the handle base kits.

NOTE: The handle kit with red mark should be installed on the left side of the body. Connect the hoses(3) to the valve bodies.

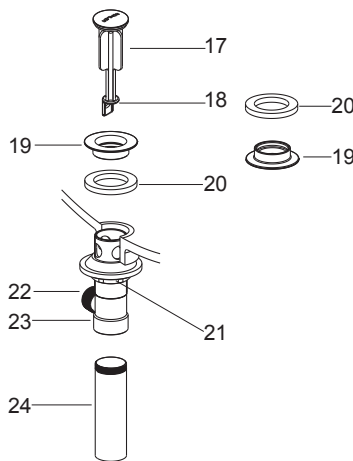


How To Install The Drain

Remove stopper(17), flange(19) and washer(20) from drain body(23). Take off the tailpiece(24). Apply thread tape to tailpiece and install the tailpiece to drain body. Insert drain body kit into the lavatory from underside, and make sure the drain lever hole(22) facing to the back of the lavatory. Screw the flange with washer into the drain body. Tighten the locknut(21) by hand from the underside of the fixture.

NOTE: If needed, apply a ring of plumbers putty around the underside of the drain flange(19), instead of using washer(20).

Place stopper(17) into drain body aligning the flat side of stopper hole(18) with the drain lever hole.

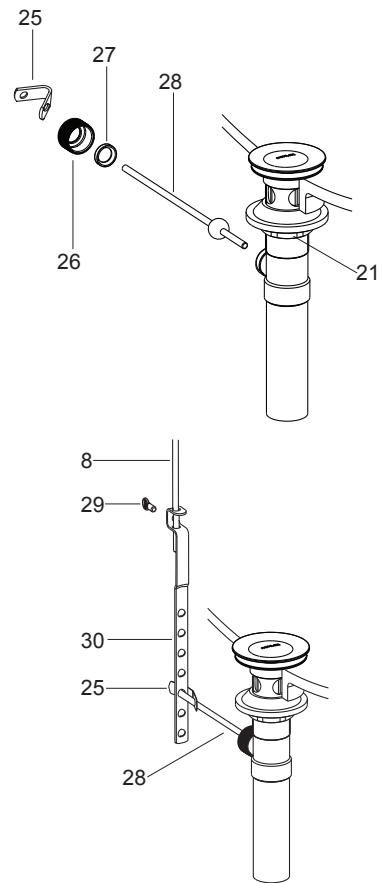


Remove the retaining nut(26). Fit the plastic washer(27) and retaining nut onto the ball lever(28). Insert the ball lever assembly into the drain lever hole and through the stopper hole. Tighten the retaining nut.

Be sure that the ball lever points to the back of the lavatory, tighten the locknut on the drain body by wrench.

NOTE: Do not reposition the drain if plumbers putty applied after the locknut is tightened, or you may break the putty seal. Wipe away excess plumbers putty.

Assemble thumb screw(29) to link(30), and link onto ball lever(28) with 'V'-clip(25). Slide lift rod(8) into the hole in link. Push the ball lever down into the open position, and adjust the lift rod. Tighten thumb screw.

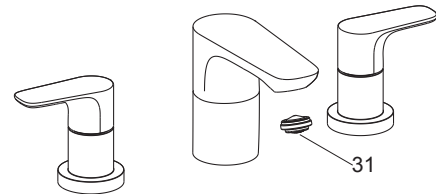


INSTALLATION CHECKOUT

Ensure that all coupling nuts are tight. Ensure that the lever handles are in the off position.

Turn on the main water supply and drain, and check for leaks. Repair as needed.

Remove the aerator(31) by coin. Run hot and cold water through faucet for about one minute to remove any debris. Check for leaks. Repair as needed. Remove any debris from the aerator. Shut off the faucet. Reinstall the aerator.



CLEANING INSTRUCTIONS

All Finishes: Clean the finish with mild soap and warm water. Wipe entire surface completely dry with clean soft cloth. Many cleaners may contain chemicals, such as ammonia, chlorine, toilet cleaner etc, which could adversely affect the finish and are not recommended for cleaning.

Do not use abrasive cleaners or solvents on Kohler faucets and fittings.