

KOHLER®

K-2215A LADENA

VITREOUS CHINA
UNDERCOUNTER BASIN
CUT-OUT TEMPLATE/INSTALLATION INSTRUCTIONS

CLIP LOCATIONS

BEFORE YOU BEGIN

Due to the nature of the installation, undercounter basins should be installed by trained and experienced installers.

Do not use adhesives or adhesive sealants with this product.

Inspect the waste and supply tubing; replace if necessary.

Prior to installation, unpack the new basin and inspect it for damage. Return the basin to its protective carton until you are ready to install it.

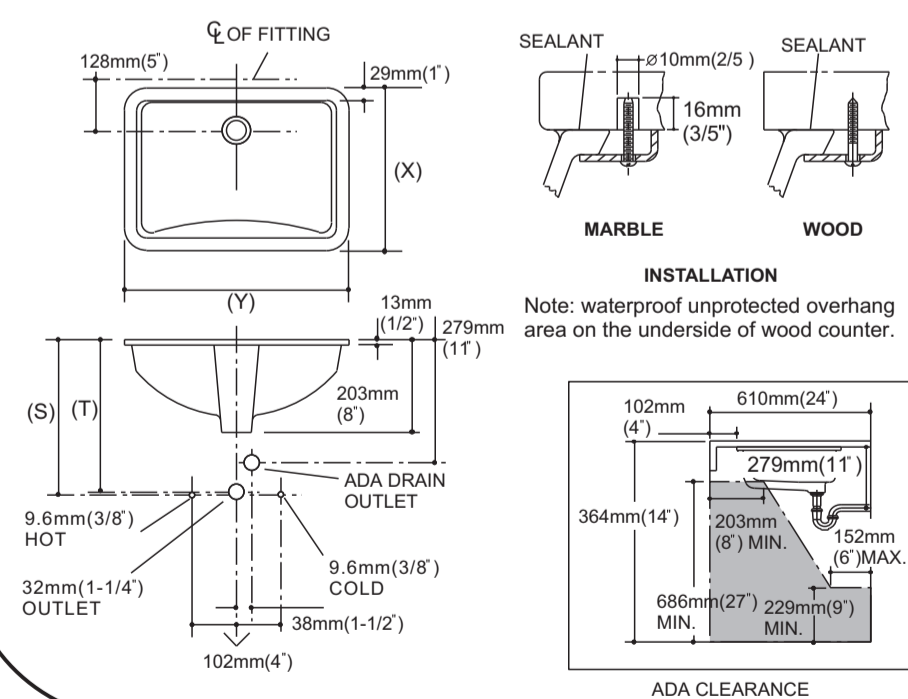
Observe all local plumbing and building codes.

TOOLS AND MATERIALS

- Sealant
- Pencil
- Tape measure
- Sharp knife or scissors
- Keyhole or saber saw
- Drill (13mm(1/2") dia. drill bit or larger)
- Safety glasses
- Hammer
- Rags or paper toweling

NOTE: You may require different, more specialized tools to install this basin to countertop materials other than wood or wood composites.

ROUGH-IN



Roughing-In Notes

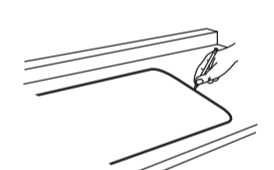
Fixture dimensions are nominal and conform to tolerances in ASME Standard A112.19.2M.
 *Based on K-6998 with 25mm(1") of tailpiece exposed.
 (T) Pop-up drain typically 349mm(13-3/4")
 (S) 356mm(14") (Based on 305mm(12") riser which may require cutting.)
 Supplied basin clamp assemblies require 25mm(1") minimum countertop thickness. Installer must supply anchors for thinner countertops.
 K-2215A: (X)= 412mm(16-7/32"), (Y)= 597mm(23-1/2")

NOTE: Using this template, the overhang is about 6mm. Customers can zoom the template by scale to meet their requirement.

INSTALL THE BASIN

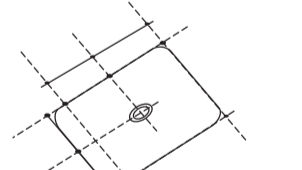
NOTE: Install so future removal from underneath the countertop is possible to avoid damage to the countertop.

- Check the desired basin location for clearance between the backsplash, tap, fixture, and cabinet.
- Cut out the template.
- Carefully position and trace the template on the countertop as directed on the template.
- Mark the tap hole centerline on the countertop.
- Drill a 13mm(1/2") pilot hole on the inside of the cut line.
- Cut out the countertop opening with a saber or keyhole saw.



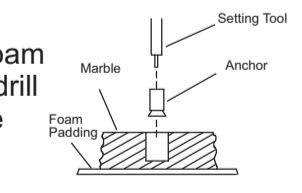
FOR WOOD COUNTERTOPS

- Mark and pre-drill the wood screw holes at the locations shown on the template.
- Waterproof any exposed areas of wood.



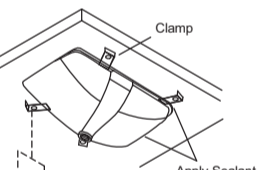
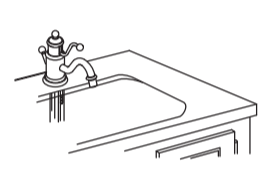
FOR MARBLE COUNTERTOPS

- Position the countertop upside down on foam padding to protect the surface. Mark and drill 10mm(3/8") holes 16mm(5/8") deep at the locations shown on the template.
- Use a setting tool and hammer to secure the anchors.



FOR ALL COUNTERTOPS

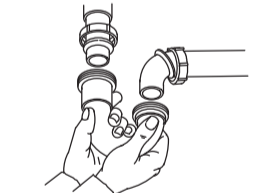
- If the countertop has not been installed, install it at this time.
- Drill the tap holes according to the tap installation instructions.
- Install the tap to the countertop according to the manufacturer's instructions.
- Install the drain to the basin according to the manufacturer's instructions.
- NOTE:** Do not use adhesives or adhesive sealants.
- Apply a continuous bead of quality sealant to the basin rim where it will contact the countertop.
- NOTE:** The screws provided should be used on countertops with a minimum 25mm(1") thickness. For thinner countertops, use appropriate anchors and fasteners.



For wood, wood composite, and marble countertops, install the basin to the countertop with the clamps and screws provided. For other countertop materials, refer to the countertop manufacturer's instructions for recommended fasteners.

Position the basin squarely under the cutout before tightening the clamps. Draw the basin rim up to the countertop until it is snug. **Do not overtighten.**

Immediately wipe away any excess sealant.



Make the final drain and tap connections to complete the basin installation. Be sure to follow all instructions packed with the drain and tap.

Clean up with a **non-abrasive** cleaner.

IMPORTANT CONSUMER INFORMATION

(CARE AND CLEANING)

To keep your basin looking new, make sure you rinse it out thoroughly after each use. **DO NOT USE ABRASIVES** on this product, as they will scratch and ruin the surface. Stubborn stains, paint, or tar can be removed with turpentine or paint thinner.

KOHLER LIMITED ONE-YEAR WARRANTY

IMPORTANT WARRANTY INFORMATION PLEASE LEAVE WITH CONSUMER

FOR PLUMBING FIXTURES AND FITTINGS

Kohler plumbing fixtures and fittings are warranted free of manufacturing defects for a period of one (1) year from the date of purchase. Kohler Co. will, at its election, pursuant to its obligations under this Warranty, repair, replace or make appropriate adjustment where Kohler Co. inspection discloses defects occurring in normal usage subject to the terms and conditions stated below.

- This Warranty applies only within the Commonwealth of Australia and New Zealand and only to the original purchaser.
- This Warranty does not cover the following:
 - Damage due to accident, improper installation or handling, faulty repairs, alteration, abuse or misuse.
 - Installed, maintained or used other than in accordance with the instructions furnished by Kohler Co.
 - Brass or gold plated fittings. (Water quality varies widely throughout Australia and New Zealand and may adversely affect gold plating or the protective acrylic coating on brass.)
 - Cistern washers or rubbers.
- The purchaser shall be responsible for and shall meet all charges in respect of making the defective plumbing fixture accessible for repair or replacement and any labor, transportation, travelling or communication expenses incurred.
- The purchaser must produce proof of the date of purchase when making a claim.
- Standard quality fixtures may contain unavoidable manufacturing imperfections of a minor character.

The purchaser's attention is drawn to the rights, conditions, warranties and liabilities, conferred or implied by Commonwealths of Australian and New Zealand and State Legislation, but subject thereto and to the extent allowed thereunder, the above Warranty is in lieu of all rights, conditions, warranties and liabilities, whether expressed or implied, including, without in any way limiting the generality of the foregoing, any implied warranty of merchantability or fitness for a particular purpose and Kohler Co. accepts no liability for any loss or damage, direct or indirect, of or to any person or property arising from the supply, installation, operation or repair of its plumbing fixtures and fittings, including consequential loss or damage arising from breakdown or failure to perform.

RIM OF BASIN

CUT ALONG THIS LINE

346mm

523mm

1002977-K02-A
COPYRIGHT © 2005 KOHLER Co.