

IMPORTANT INFORMATION

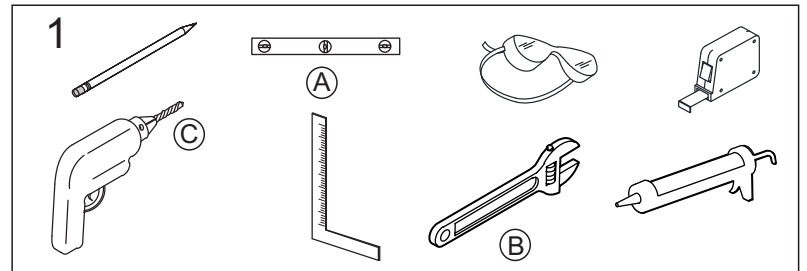


WARNING: Risk of personal injury or product damage. Handle with care.
Vitreous China can break or chip if the bolts and nuts are over-tightened, or if the product is handled carelessly.

- Observe all local plumbing and building codes.
- Carefully inspect the new lavatory & pedestal for any damage.
- Consumer should preserve this document to order spare parts in future.

TOOLS & MATERIALS REQUIRED

- A. Spirit Level Refer Figure 1
- B. 10" Adjustable Wrench
- C. Hammer Drill with 14mm Drill Bit

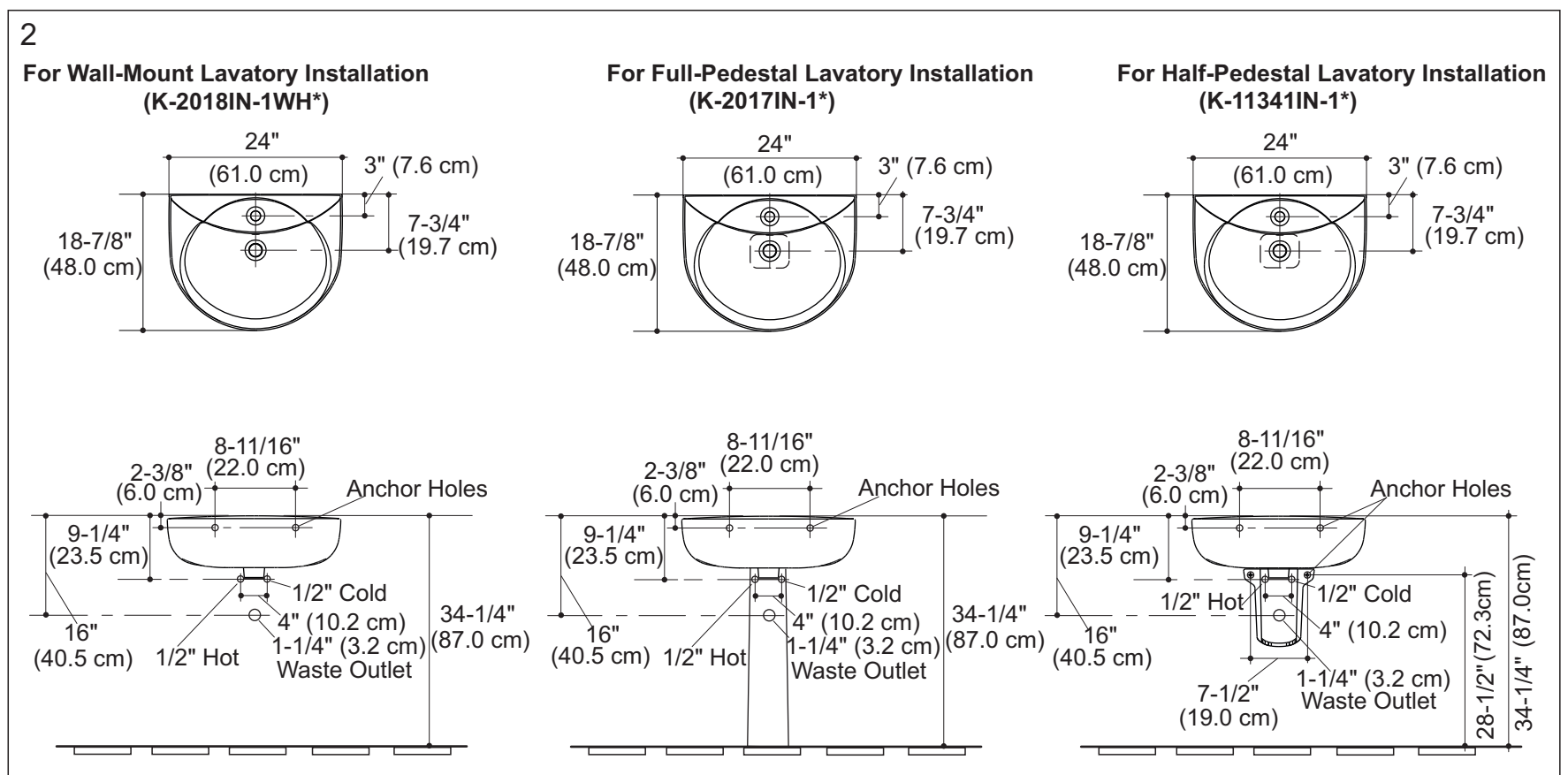


ORDERING INFORMATION

- | | |
|--|--|
| Folio™ WM Lavatory, Single HoleK-2018IN-1WH* | Folio™ Half-Ped Lavatory, Single Hole.....K-11341IN-1* |
| Folio™ Full-Ped Lavatory, Single Hole.....K-2017IN-1* | Includes Folio™ Half-Pedestal.....K-11340IN* |
| Includes Folio™ Pedestal.....K-2019IN* | Includes Folio™ WM Lavatory, Single Hole.....K-2018IN-1WH* |
| Includes Folio™ WM Lavatory, Single Hole.....K-2018IN-1WH* | |

* Available in "-0 (White)" & "-96 (Biscuit)"

ROUGHING-IN



- All dimensions in inches (cm). Fixture dimensions are nominal and conform to tolerances as per ASME Standard A112. 19.2M.
- Product illustrations shown are representative only; actual products may vary.
- Kohler reserves the right to make changes in product characteristics, packaging or availability at any time without notice.

CAUTION : Do not use cement or high lime content cement to install the lavatory. The expansion of lime/cement due to rise in temperature may cause the lavatory to crack or be damaged. Kohler is not responsible for any damage caused by installation with the use of Lime/ Cement.

INSTALLATION GUIDELINE

1. Prepare the Site :-

- Rough-in the supplies & the drain piping. For dimensions, Refer Fig.#2.
- Install 1/2" water supply lines & 1-1/4" drain piping according to the roughing-in information.
- Install sufficient backing behind the finished wall to provide a secure material for the anchoring devices.

NOTE :- Please ensure that Angle-Valve handles do not extend beyond 76mm (3") from the finished wall when in open position. This will ensure the handles will not touch the pedestal when fully open.

2. Installation of the Lavatory :-

WALL-MOUNT INSTALLATION (K-2018IN-1WH*)

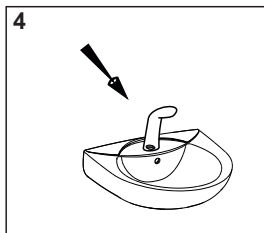
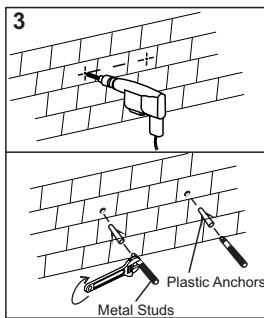
1. Drill two Ø14mm Anchor holes, 76 mm deep into the wall according to the Rough-in diagram.
2. Insert the plastic anchors (provided) in two holes.
3. Insert the metal studs (provided) into these plastic anchors using an adjustable wrench.
4. Ensure that at least 70 mm (approx.) of each stud should remain exposed from the wall.

Refer Fig. #3

5. Install the faucet & drain to the lavatory according to the manufacturer's instructions.

NOTE :- Do not fully tighten slip-joint drain connections at this time.

Refer Fig. #4



6. Carefully place the lavatory against the wall, so the metal studs extend through the lavatory holes.
7. Level the lavatory.
8. Install the plastic washer & nut (provided) & tighten suitably.

CAUTION : Risk of product damage.

Do not over tighten the nut. Over tightening may cause damage to the product.

*** Use wrench to tighten 8-10 N-m/ 6-9 turns. (1 turn = 45°) past finger tight.**

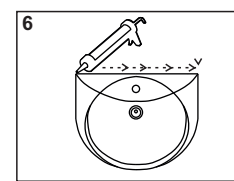
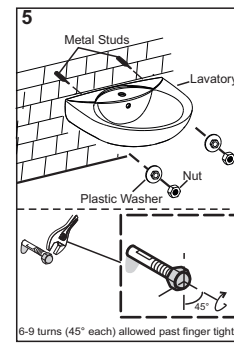
Refer Fig. #5

9. Connect & tighten the bottle trap as per manufacturer's instructions. Connect the hot & cold water supplies to the faucet.

10. Evenly put the sealant around the mounting surface of the lavatory touching the wall.

Refer Fig. #6

11. Clean the lavatory top.



FULL-PEDESTAL INSTALLATION (K-2017IN-1*)

1. Apply self-adhesive leveling pads (provided) to each of the three ridges in the bottom recess of the lavatory.

Refer Fig. #7

2. Mark the centerline on the floor with a pencil & position the pedestal on the floor centerline location. Refer to the roughing-in dimensions for correct placement.

3. Carefully set the lavatory on the pedestal & move the pedestal as required to ensure proper fit in the desired location.

NOTE :- The lavatory must be supported by the pedestal.

4. Mark the center of each anchoring hole on the wall.
5. Carefully remove the lavatory from the pedestal. Then move the pedestal from the area.

Refer Fig. #8

6. Drill two Ø14mm Anchor holes, 76 mm deep into the wall at the marked location.

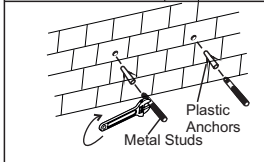
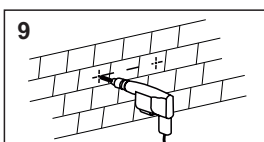
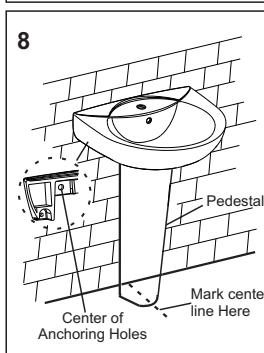
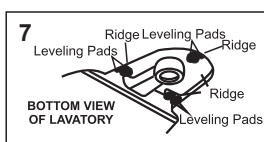
7. Insert the plastic anchors in two holes.

8. Insert the metal studs (provided) into these plastic anchors using an adjustable wrench.

9. Ensure that at least 70 mm (approx.) of each stud should remain exposed from the wall.

Refer Fig. #9

10. Install the faucet & drain to the lavatory according to the manufacturer's instructions.



NOTE :- Do not fully tighten slip-joint drain connections at this time.

Refer Fig. #10

11. Carefully place the lavatory against the wall, so the metal studs extend through the lavatory holes. Install the washer and nut. Do not fully tighten the nuts at this time for pedestal adjustment.

Refer Fig. #11

12. Connect & tighten the trap as per manufacturer's instructions. Connect the hot & cold water supplies to the faucet.

13. Place the Pedestal with proper adjustment & level the lavatory. Use additional self-adhesive leveling pads as required to level the lavatory. Tighten the nuts suitably.

CAUTION : Risk of product damage.

Do not over tighten the nut. Over tightening may cause damage to the product.

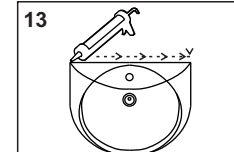
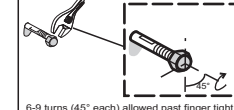
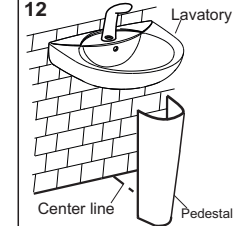
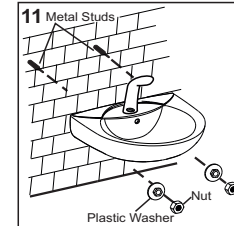
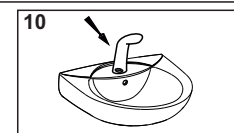
*** Use wrench to tighten 8-10 N-m/ 6-9 turns. (1 turn = 45°) past finger tight.**

Refer Fig. #12

14. Evenly put the sealant around the mounting surface of the lavatory touching the wall.

Refer Fig. #13

15. Clean the lavatory top.



HALF-PEDESTAL INSTALLATION (K-11341IN-1*)

1. Apply self-adhesive leveling pads (provided) to each of the three ridges in the bottom recess of the lavatory.

Refer Fig. #14

2. Mark the centerline on the wall with a pencil.
3. Mark the location of the mounting holes of the lavatory according to the Roughing-In diagram.

4. Drill two Ø14mm Anchor holes, 76 mm deep into the wall at the marked location.

5. Insert the plastic anchors in two holes.

6. Insert the metal studs (provided) into these plastic anchors using an adjustable wrench.

7. Ensure that at least 70 mm (approx.) of each stud should remain exposed from the wall

Refer Fig. #16.

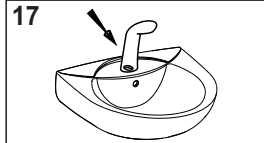
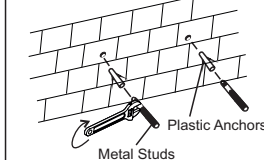
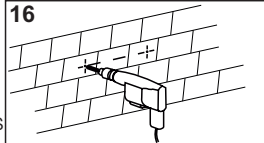
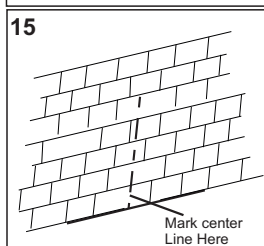
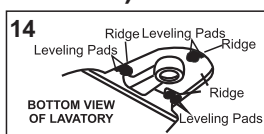
8. Install the faucet & drain to the lavatory according to the manufacturer's instructions

NOTE :- Do not fully tighten slip-joint drain connections at this time.

Refer Fig. #17

9. Place the Lavatory onto metal studs and install the washer and nut. Do not fully tighten the nuts at this time for pedestal adjustment.

Refer Fig. #18



10. Connect & tighten the trap as per manufacturer's instructions. Connect the hot & cold water supplies to the faucet.

11. Place the Half-Pedestal beneath the lavatory & mark the location of mounting holes of Pedestal.

12. Install the Half-Pedestal with suitable hard wares.

13. Level the lavatory. Use additional self-adhesive leveling pads as required to level the lavatory.

14. Tighten the lavatory nuts properly to complete the installation.

CAUTION : Risk of product damage.

Do not over tighten the nut. Over tightening may cause damage to the product.

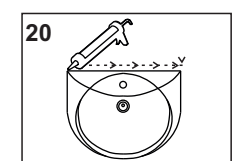
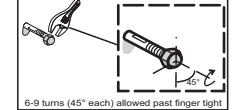
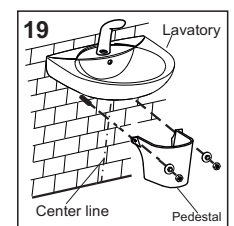
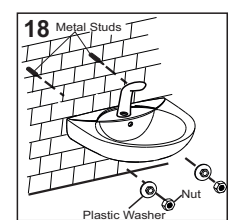
*** Use wrench to tighten 8-10 N-m/ 6-9 turns. (1 turn = 45°) past finger tight.**

Refer Fig. #19

15. Evenly put the sealant around the mounting surface of the lavatory touching the wall.

16. Clean the lavatory top.

Refer Fig. #20



* Installation doesn't allow use of any tool other than standard wrench. For this reason, split turns have been mentioned rather than full turns.

SERVICE PARTS (Supplied with the Product)

A. Hardware Kit **1213117**

B. Levelling Pads **63069**

Important Notice for Care, Cleaning & Daily use

To keep your lavatory looking new, make sure you rinse it out thoroughly after each use.

DO NOT USE ABRASIVES on this product, as they will scratch & ruin the surface.

Stubborn stains, paint, or tar can be removed with turpentine or paint thinner.

Toll Free 1800 103 2244

kohler.co.in

© 2006 Kohler Co.